

“Stebbins Piano Series”

Betty Woo

Thursday, September 26, 2019, 12:15 – 1:00 p.m.

6 Preludes and Fugues from *The Well-Tempered Clavier* Bk 2 by J. S. Bach (1685 – 1750)

Prelude and Fugue No. 13 in F# major
Prelude and Fugue No. 14 in F# minor
Prelude and Fugue No. 15 in G major
Prelude and Fugue No. 16 in G minor
Prelude and Fugue No. 17 in A \flat major
Prelude and Fugue No. 18 in G# minor

Hong Kong-born pianist, Betty Woo, received her D.M.A. degree in performance practice from Stanford University and the Artist Diploma from the Royal Academy of Music in London. At the start of her performing career, she received a special prize for the best performance of a twentieth-century piece in the Gina Bachauer International Competition and a special award in the Carnegie Hall International American Music Competition. She has made major solo appearances in London and New York, conducted masterclasses, gave lectures at conservatories in Hong Kong and Shanghai, and appeared in such festivals as The Fringe Festival in Edinburgh, Olympics in Washington, Yachats in Oregon and Music in the Mountain in California. She has also collaborated with many diverse groups and performers, such as the contemporary music groups Earplay and the San Francisco Contemporary Chamber Players, the dance companies Oakland Ballet, Morphoses/The Wheeldon Company Group and the Paul Taylor Dance Company, and instrumentalists like the cellist Jennifer Culp. She is also a member of the Trio Brillante. A very successful teacher, Ms. Woo has taught for many years at the San Francisco Conservatory and Holy Names University, and currently teaches piano at University of California, Berkeley, and frequently gives talks to various music teacher groups in the Bay Area. She is also a board member of the MTAC Alameda County Branch and US Open Music Competition, and has judged in many competitions.

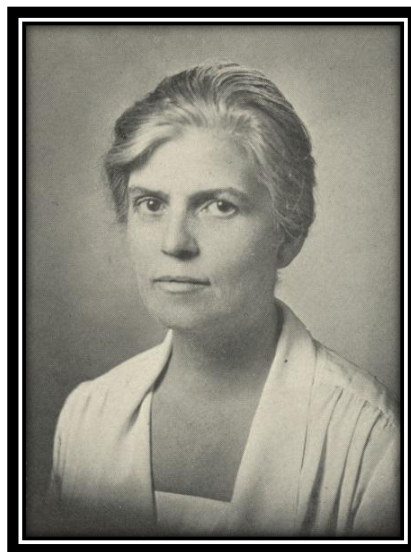
Women’s Faculty Club – Stebbins Lounge

Events are complimentary and open to the campus community

Reservations Requested – RSVP (510) 642-4175 or womensfacultyclub@gmail.com

The Women's Faculty Club presents -

“Stebbins Piano Series”



Join us for a series of music concerts
named for the first President of the Women's Faculty Club
Dean Lucy Ward Stebbins.

Stebbins served as the Second Dean of Women Students on the Berkeley campus. Together with women faculty who were “the first” of almost everything at Berkeley, she founded our Club in 1919. Stebbins was also a tireless advocate for women students of her era.

The “Stebbins Piano Series” celebrates both the space that Stebbins helped to create as well as the Club's 1902 Steinway piano. Cal students rescued the piano in 1923 from the home of President Emeritus Benjamin Ide Wheeler as the Berkeley hills burned. After the death of President Wheeler's wife, Amey Webb Wheeler, the piano was donated to the Women's Faculty Club in honor of that early rescue and the safe harbor that the Club provided.

Now we honor both women's legacies with a series featuring U.C. Berkeley's current keyboard students and instructors performing on the Club's historic Steinway in the Lucy Ward Stebbins Lounge!

Enjoy!