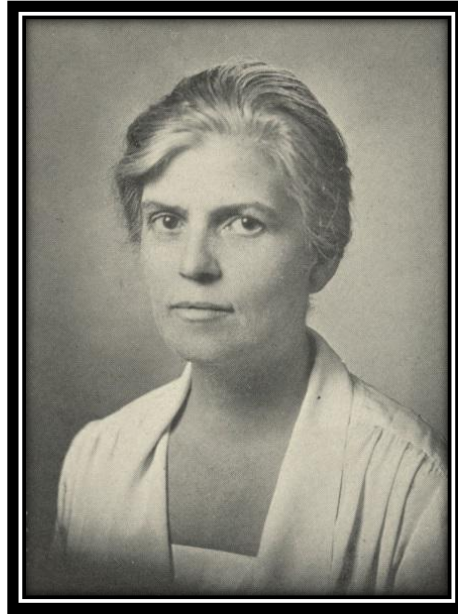


The Women's Faculty Club presents -

“Stebbins Studio Series”



Join us as we launch a new program of music named for the first President of the Women's Faculty Club Dean Lucy Ward Stebbins.

Stebbins served as the Second Dean of Women Students on the Berkeley campus. Together with women faculty who were “the first” of almost everything at Berkeley, she founded our Club in 1919. Stebbins was also a tireless advocate for women students of her era.

The “Stebbins Studio Series” will celebrate both the space that Stebbins helped to create as well as the Club's 1902 Steinway piano. Cal students rescued the piano in 1923 from the home of President Emeritus Benjamin Ide Wheeler as the Berkeley hills burned. After the death of President Wheeler's wife, Amey Webb Wheeler, the piano was donated to the Women's Faculty Club in honor of that early rescue and the safe harbor that the Club provided.

Now we honor both women's legacies with a series featuring U.C. Berkeley's current keyboard students performing on the Club's historic Steinway in the Lucy Ward Stebbins Lounge!

Come enjoy!



“Stebbins Studio Series”

Thursday, November 9, 2017

12:15 p.m. – 1:00 p.m.

The Fifth of the Stebbins Studio Series Concerts

Cole Stanford

Prelude and Fugue in C minor from WTC, Vol. I **Johann Sebastian Bach**
(1685-1750)

Romanze in F major, Op. 118, No. 5 (1893) **Johannes Brahms**
(1833-1897)

Intermezzo in E minor, Op. 116, No. 5 (1892)

Rhapsody in G minor, Op. 79, No. 2 (1879)

Sonatine (1903-5) **Maurice Ravel**
(1875-1937)

- i. Modéré*
- ii. Mouvement de menuet*
- iii. Animé*

Cole Stanford, piano

Siete canciones populares españolas (1914) **Manuel de Falla**
(1876-1946)

- i. El paño moruno*
- ii. Seguidilla murciana*
- iii. Asturiana*
- iv. Jota*
- v. Nana*
- vi. Canción*
- vii. Polo*

Cole Stanford, voice
William Wang, piano

Women’s Faculty Club – Stebbins Lounge